



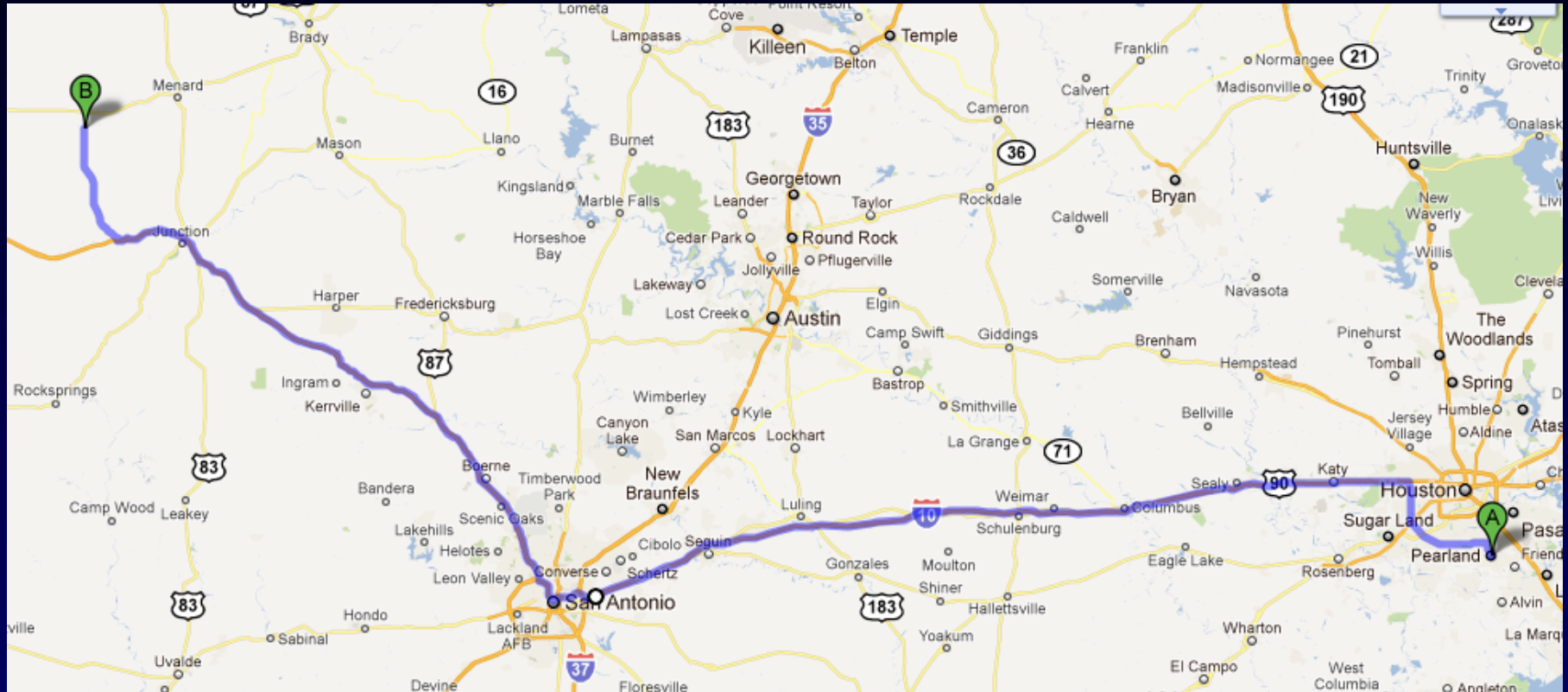
Fort McKavett

October 12-15th, 2023

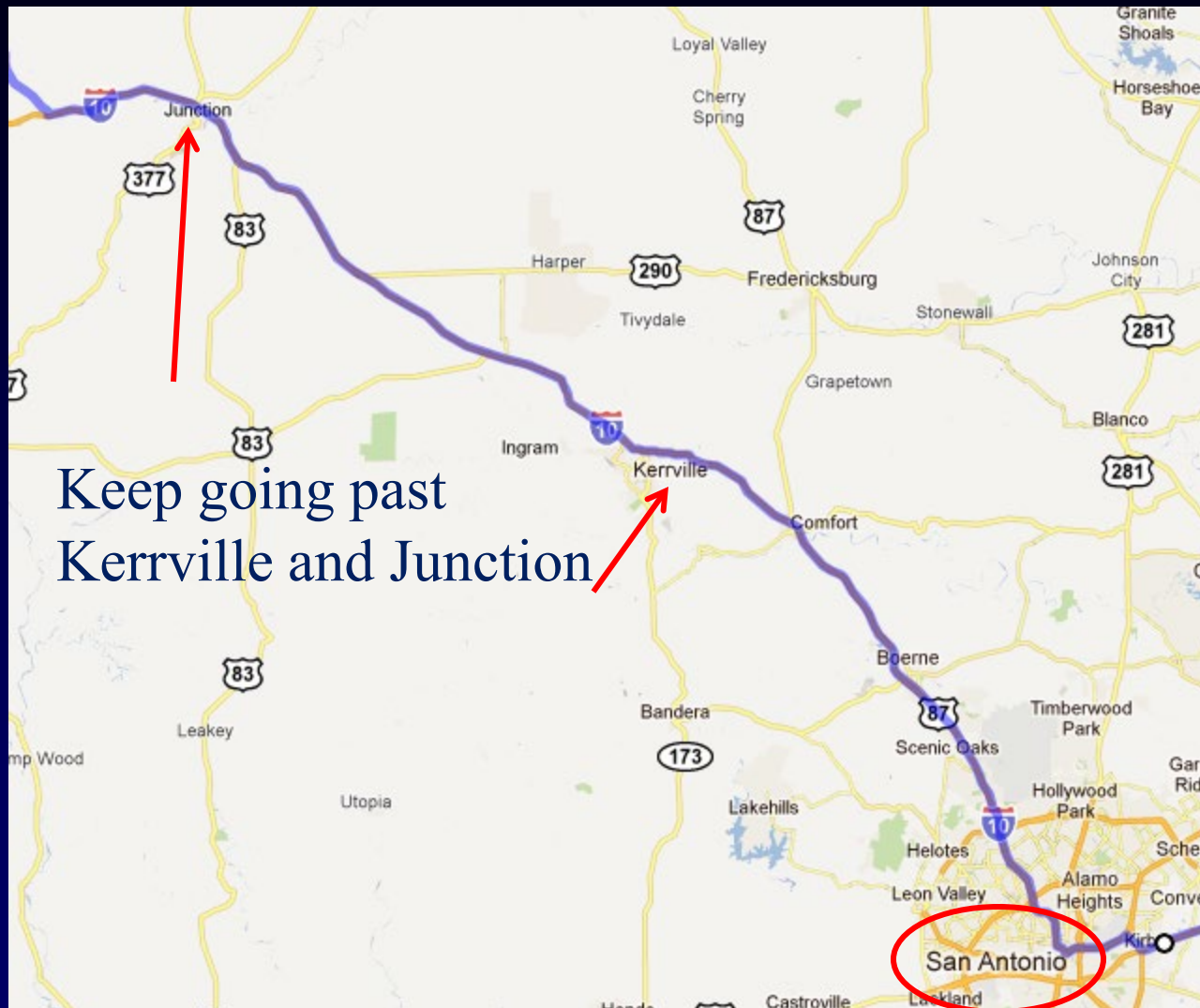
Latitude is 30-49-46.5 Longitude is 100-06-24.1 Elevation is ~ 2000 FT. AMSL



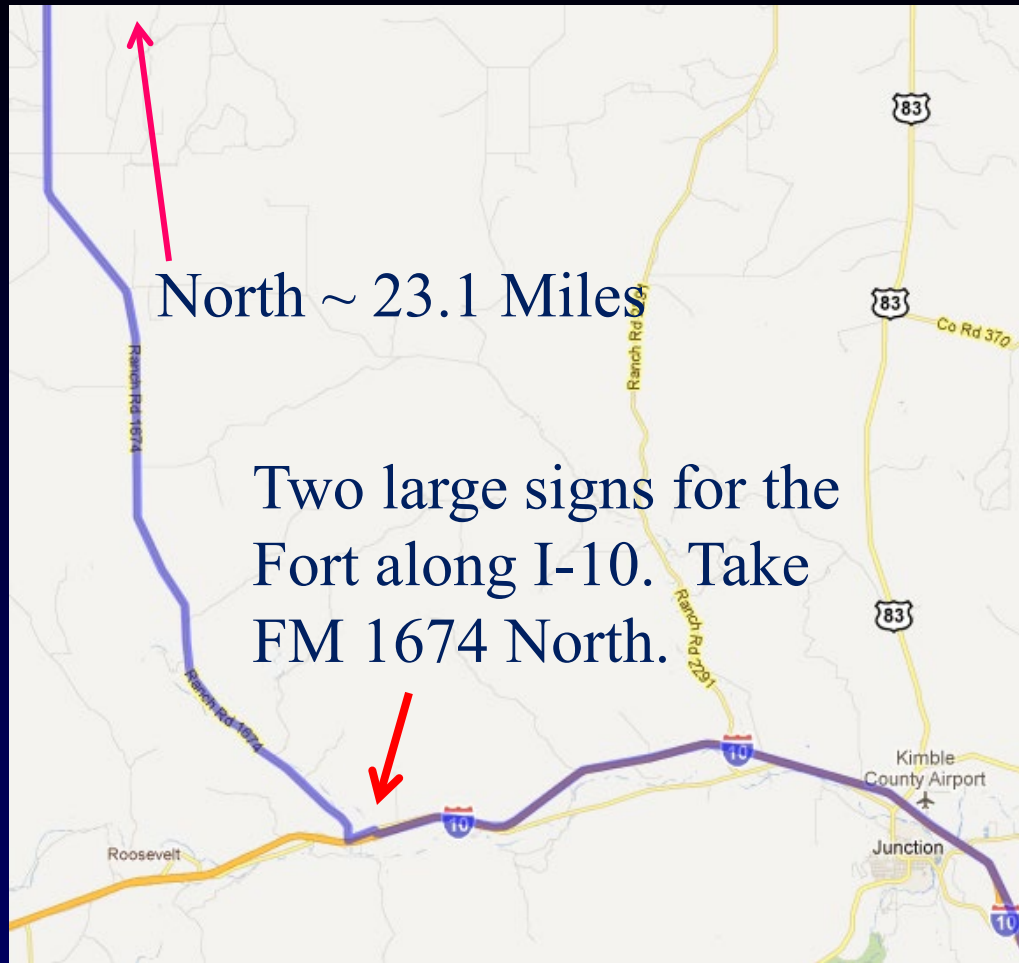
Just WHERE is Fort Mac???



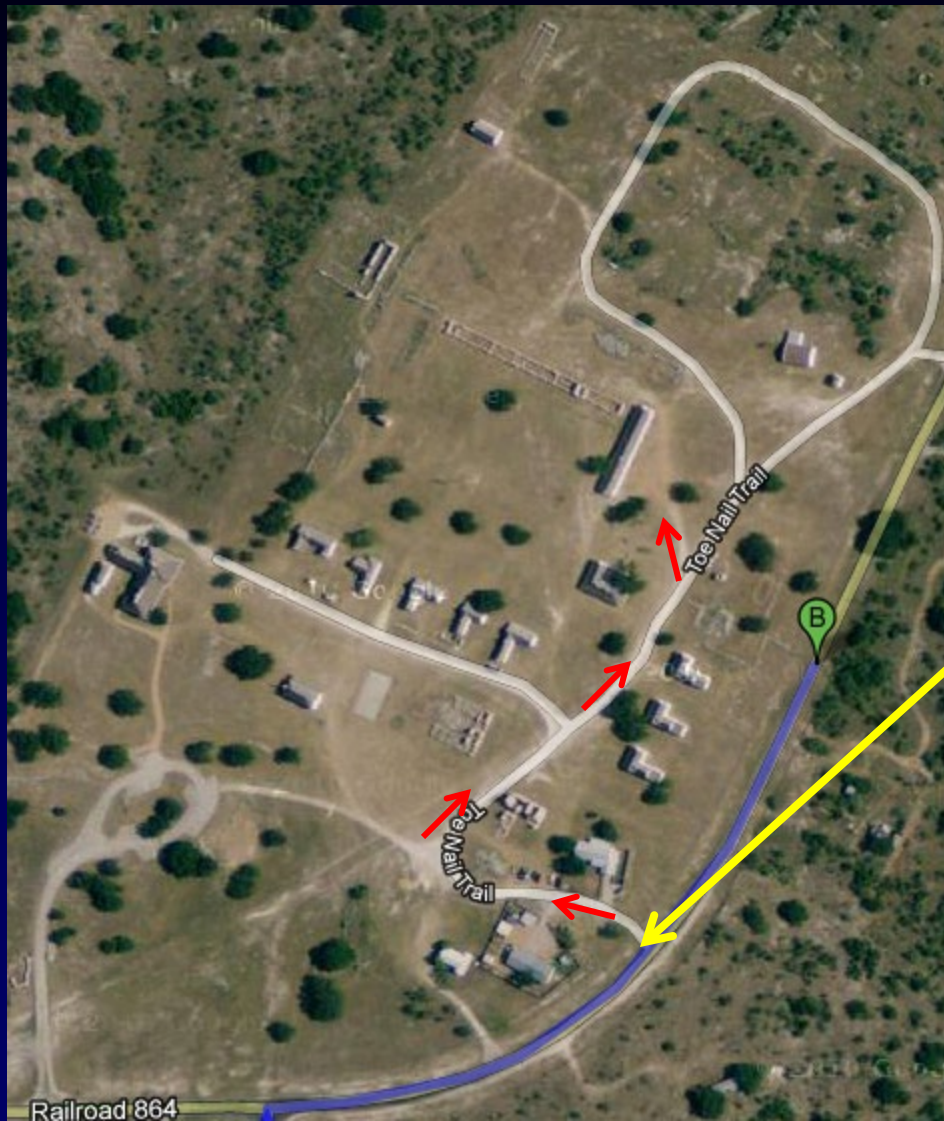
~365 miles... transit time depends on you and the number of stops you make along the way.



Keep going past
Kerrville and Junction

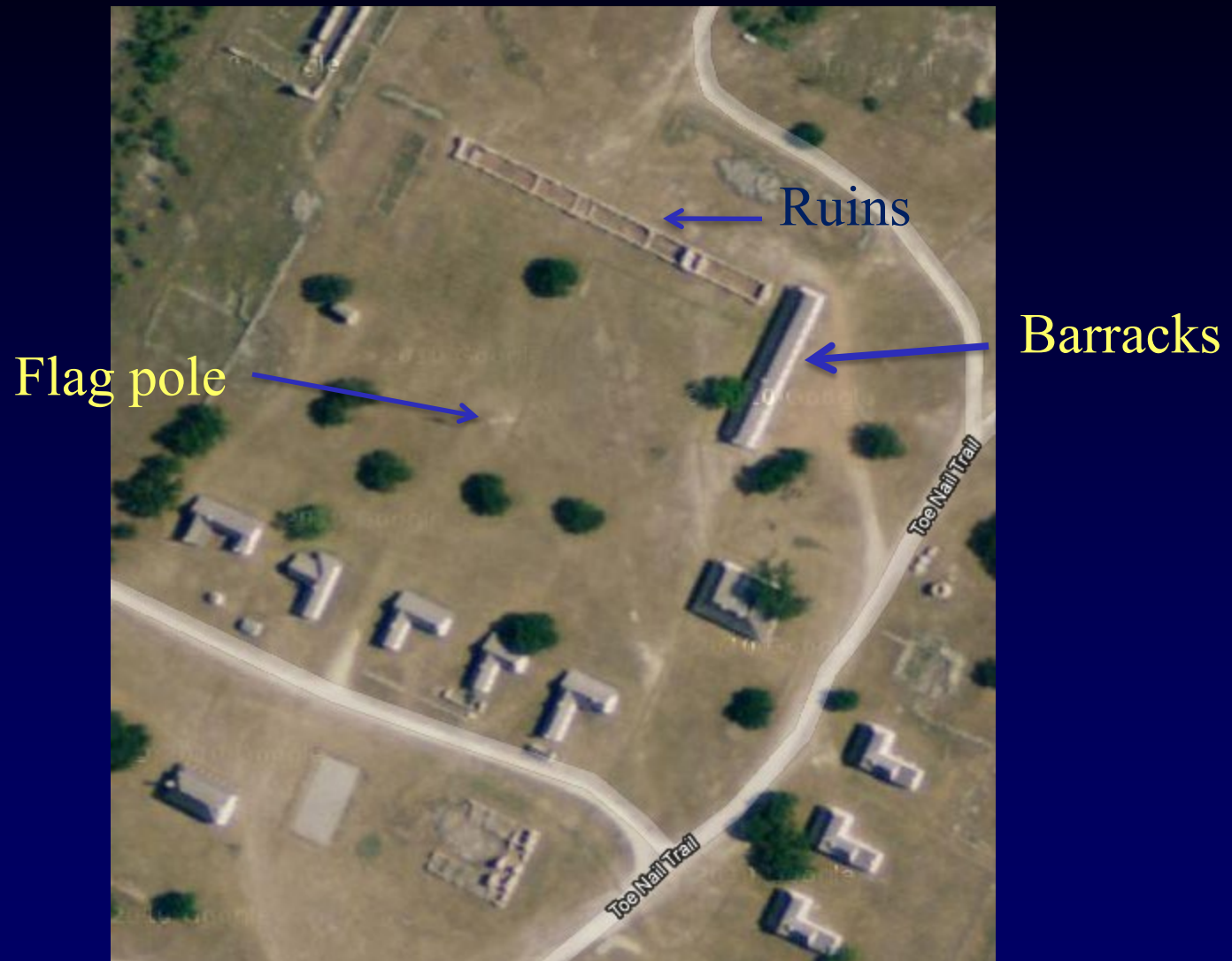


Along FM 1674 watch for deer and rabbits, especially at dusk and throughout the evening. The Fort will appear when you crest the last hill. Turn right at the stop sign.



After making the right turn, make the left turn and enter here and drive around to the ruins and barracks.

From Google Earth



On this particular trip to the Fort, this also includes the Annular Solar Eclipse on Saturday the 14th. This is not at total eclipse and you will still need your safety glasses!!!



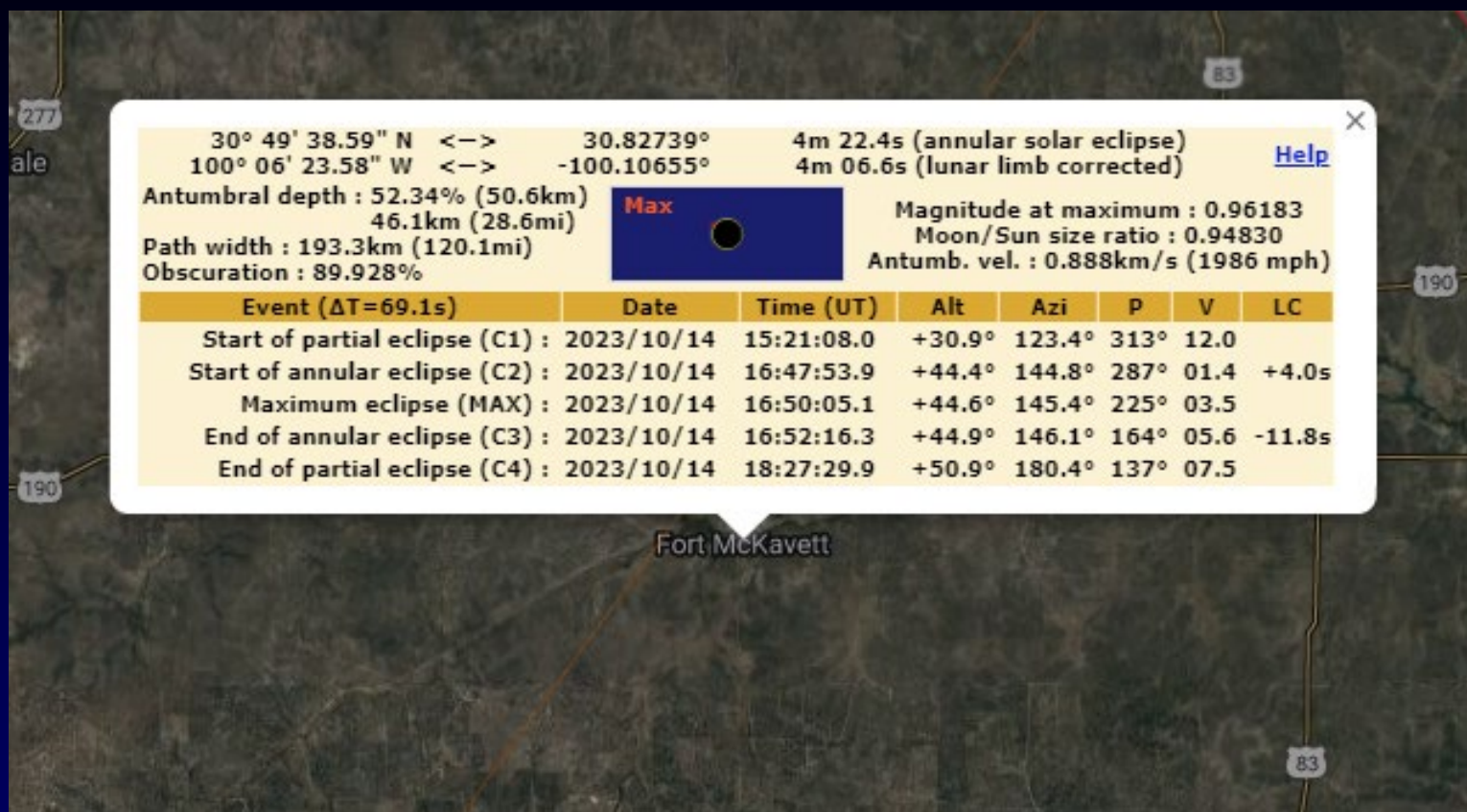
Dialing in a bit tighter!

Northern
Edge

Center Line







UT to local is 5 hours. 15:21 at the Fort is 10:21 local.

<https://dateful.com/convert/utc>

http://xjubier.free.fr/en/site_pages/SolarEclipsesGoogleMaps.html



Parade Grounds...



Views of the
barracks and along
the ruins...



Scopes and folks on the parade grounds...





Parking in back of the barracks.

“RV – row”.
Water and 30Amp Service





If you see this guy,
stay close... he cooks
very well and you
won't be hungry for
long!



We always gather for the mandatory group picture...





School house, where Saturday BBQ is

Ruins, great for tents.

Cars and trailers

What to bring?

- Double check weather!! www.weather.com or whatever you prefer. In March we have had weather in the 70's/low 80's all the way down to 21°F in March of 03!! Check weather at least 10 days prior and watch it through time. Pack accordingly. October can be nippy as well.
- Bring sleeping bag and clothes apropos for weather (don't bring a fleece sleeping bag if it's going to be in the 30s/40's). If cool, you will need extra clothes, or a "hunter's suit", mitts and hat.
- Scout motto: Be Prepared. Come with Google Maps of the area so you know how to get to Menard, Junction, and even San Angelo if you think you'll have need. Hard copies are suggested as cell phone service for some may be limited.

Food

Planning ahead helps! Plan all of your own meals just in case.

For Friday night, bring something to put on the grill, and bring side dish. This is a pot-luck meal. Plan for alternatives if there is a “burn ban”.

If you arrive early enough on Thursday – a group usually heads to Menard to one of the local restaurants (be prepared – some are cash only).

Food (cont.)

Ice for coolers – you have two options. Menard or Junction. Hopefully word will get around that someone may be heading to Menard or Junction and coordinate and ice run from there.

Plan what to want to eat and how you want to work it. No camp stove, bring a folding table and an electric skillet. Don't forget the coffee pot and the coffee. Bring plenty of bottled water.

Schedule

- Arrive Thursday – set up, Dinner (traditionally – many go to Menard for Tex/Mex), then observe
- Friday – Breakfast and Lunch – you are on your own. Dinner is communal Grill/Pot luck), then observe.
- Saturday – Breakfast, lunch, and dinner are up to you. Understand that Saturday night is the public star party. That is our service to the Fort. Please participate.
- Sunday – on your own food wise -- pack up, and leave.

Anyone wanting to go must contact: "Lisa Lester"
lisa@riverofstars.net

What you will find at Ft. McKavett

- Showers – two - open air, but enclosed. Only buzzards and airplanes with really good cameras can see you. H&C running water in the showers.
- Bathrooms and porta-potties
- Nice people
- Great skies – weather permitting
- A chance to “get away from it all” for a few days – don’t plan on much cell service. (AT&T is passable but Verizon goes DOA about 2 miles north of I-10.

What you WON'T find at Ft. McKavett

Quite a bit! - You need to be self sufficient.

- About all you'll find in Ft. McKavett is the sky.
- Nearest town is Menard, 23 miles with groceries, ice, and some amenities, passable restaurants (some are cash only!).
- Junction is ~40 miles away, with more to it.
- Nearest Walmart is in Brady, ~ 60 miles away.
- San Angelo ~ 80 miles away, small city.

Get the feeling you're in the middle of nowhere?

Well, you're out there for a reason!



Above all – HAVE FUN!!!

Any questions: feel free to email some in the club off the webpage, our list group. ALL reservations must be handled through Lisa Lester (lisa@riverofstars.net)